

Facet's standard carbon steel VCS Series SuperFlex™ Coalescer Separators are small, economical housings for in-line removal of water and solids from aviation fuels where water content is a problem. Using Facet high quality coalescer and separator cartridges, they provide the best water and solids removal.

RELIABLE PERFORMANCE

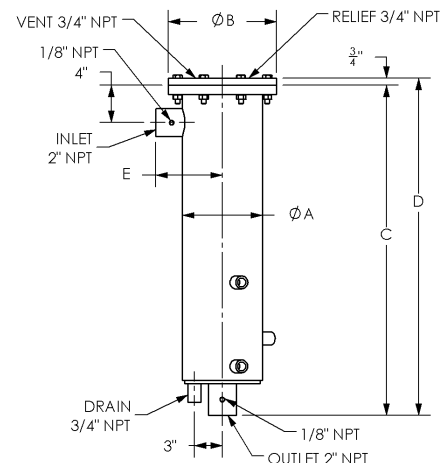
Facet coalescer separators are a result of over 50 years of continuous research and development to meet the ever demanding performance requirements in the aviation fuel handling industry. This, along with proven field performance, demonstrates Facet's ability to provide quality products that meet current specifications as well as specific customer requirements for installations in refineries, bulk storage, terminals, heliports, airports, etc.

STANDARD HOUSING DESIGN

- Welded carbon steel construction—other materials available on request
- ASME Code, Section VIII construction, stamped and certified
- Design pressure: 250 psi @ 250°F
- Main closure: Blind Flange
- Head gasket: Buna-N—other materials available on request
- Vent connection: 3/4" NPT
- Drain connection: 3/4" 3000# NPT
- Inlet and outlet connections: 2" 3000# NPT
- Differential pressure gauge connection: 1/8" NPT
- Interior: Epoxy coated (MIL-PRF-4556)
- Exterior: Prime coated

OPTIONS

- Air eliminator
- Air eliminator check valve
- Manual drain valve
- Pressure gauge assembly
- Pressure relief valve
- Sampling probes
- Adjustable support stand



| MODEL NUMBER | INLET/OUTLET DIAMETER | | DIMENSIONS | | | | | | | | | | | | WEIGHT | | LIQUID VOLUME | |
|-------------------|-----------------------|-----|-------------------------------|-----|--------------------------------|-----|--------------------------------|------|--------------------------------|------|-------------------------------|-----|------|------|--------|-------|---------------|--|
| | | | A | | B | | C | | D | | E | | | | | | | |
| | in. | mm. | in. | mm. | in. | mm. | in. | mm. | in. | mm. | in. | mm. | lbs. | kgs. | gals. | ltrs. | | |
| VCS-123-7-1S412FC | 2 | 51 | 8 ⁵ / ₈ | 219 | 11 ⁵ / ₈ | 295 | 35 ³ / ₈ | 899 | 36 ¹ / ₈ | 918 | 7 ¹ / ₈ | 181 | 100 | 45 | 7 | 26 | | |
| VCS-223-7-1S422FC | 2 | 51 | 8 ⁵ / ₈ | 219 | 11 ⁵ / ₈ | 295 | 49 ⁷ / ₈ | 1267 | 50 ⁵ / ₈ | 1286 | 7 ¹ / ₈ | 181 | 125 | 56 | 10 | 38 | | |
| VCS-323-7-1S432FC | 2 | 51 | 8 ⁵ / ₈ | 219 | 11 ⁵ / ₈ | 295 | 63 ³ / ₈ | 1622 | 64 ³ / ₈ | 1641 | 7 ¹ / ₈ | 181 | 150 | 68 | 13 | 49 | | |



STANDARD DESIGN FEATURES

- Provides two-stage coalescing and separation
- Recommended maximum operating temperature: 240°F (115°C)
- Maximum differential pressure: 75 psi (517 kPa)
- pH range from 5 to 9
- Flow direction: Outside to in
- All metal components coated to protect against corrosion
- Standard gaskets are Buna-N—other materials available on request

DIMENSIONS

| MODEL NUMBER | OD | | ID | | LENGTH | | WEIGHT | |
|------------------|-----------------|-----|-----------------|-----|-------------------|-----|--------|------|
| | in. | mm. | in. | mm. | in. | mm. | lbs. | kgs. |
| COALESCER | | | | | | | | |
| CC-23-7 | 7 $\frac{5}{8}$ | 194 | 5 $\frac{5}{8}$ | 143 | 13 $\frac{1}{16}$ | 348 | 4 | 1.8 |
| SEPARATOR | | | | | | | | |
| SS412FC | 4 $\frac{1}{8}$ | 105 | 1 $\frac{7}{8}$ | 48 | 11 $\frac{1}{2}$ | 292 | 3 | 1.4 |
| SS422FC | 4 $\frac{1}{8}$ | 105 | 1 $\frac{7}{8}$ | 48 | 21 $\frac{1}{2}$ | 571 | 6 | 2.7 |
| SS432FC | 4 $\frac{1}{8}$ | 105 | 1 $\frac{7}{8}$ | 48 | 31 $\frac{1}{2}$ | 800 | 9 | 4.1 |

FLOW RATES & ELEMENT MODELS

| MODEL | ELEMENTS | | JET FUEL (1) | | JET FUEL (2) | | AV-GAS | |
|-------------------|-----------|-----------|--------------|-----|--------------|-----|--------|-----|
| | COALESCER | SEPARATOR | gpm | lpm | gpm | lpm | gpm | lpm |
| VCS-123-7-1S412FC | CC-23-7 | SS412FC | 37 | 140 | 25 | 94 | 55 | 208 |
| VCS-223-7-1S422FC | CC-23-7 | SS422FC | 75 | 284 | 50 | 189 | 100 | 378 |
| VCS-323-7-1S432FC | CC-23-7 | SS432FC | 112 | 424 | 75 | 284 | 168 | 636 |

1) Qualified to Third Edition of API 1581, Groups I & II, Class C

2) Tested to meet the effluent requirements of EI 1581, Fifth Edition, Category C & M, Type S-LW