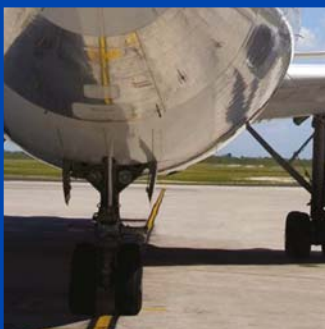


PECOFacet

Electronic Sensors
for Jet Fuel Quality
Management & Control



a new era
in filtration
performance
& innovation



PROVIDES TRACEABILITY TO THE FUEL QUALITY MANAGEMENT

GENERATES NECESSARY ALARMS

IT MAY STOP THE SUPPLY PROCESS

LOCAL SHUTDOWN FUELING OPERATIONS

LOCAL WARNING / E-MAIL / POP-UP ALARM

ALERT PREDEFINED LEVEL SETTINGS

REAL TIME REMOTE MONITORING

DATA STORAGE

HM INTERFACE

ACCESS TO THE REPORTS AND GRAPHS THROUGHOUT THE INTERNET

Discover JETGARD, the most advanced, safe and versatile fuel quality management system in the market.

PECOFacet's JETGARD system monitors in Real Time fuel cleanliness with regard to free water and particulate matter, while also measuring the differential pressure/corrected differential pressure in the Filter/Water Separator or Monitor Filter, during fuelling operations.

Unlike other fuel quality control systems, JETGARD automatically transfers and places the data resulting from the sampling at the disposal of the Associated Company and presents the data graphically.

Fuel quality pictures through the whole fuel distribution supply chain.

JETGARD automatically presents differential pressure chart and values registered in every fuelling operation according to the ISO 4406-1999 code scale numbers.

With the aim of making easier the queries from anywhere, the graphs are generated in broadly spread file formats, such as .pdf or .xls (Adobe Acrobat® / Microsoft Excel®).

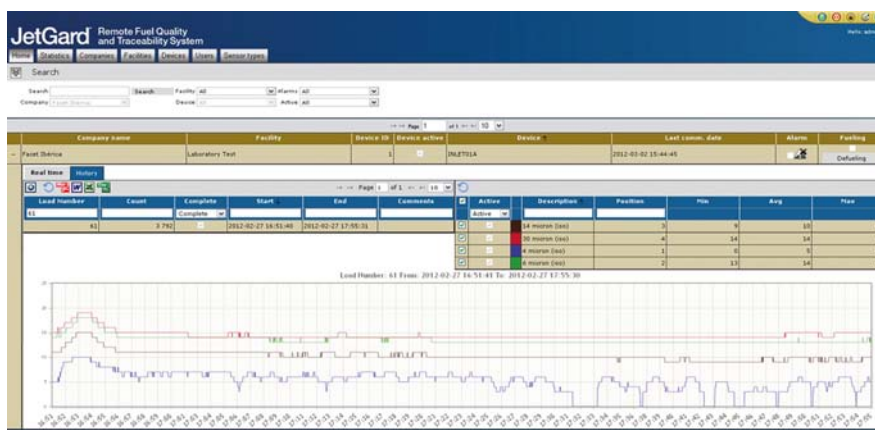


JetGard provides traceability to the fuel quality management and generates necessary alarms.

JETGARD provides traceability to the fuel quality management and generates necessary alarms. It may stop the supply process.

Depending on the kind of installation and procedure required, the alarms will generate:

- e-mail (warning that will be sent to the authorized user/s),
- pop-up warning
- supply interruption (in airship report proceedings, operating directly in the deadman circuit).



PF-CDPI[®]

CORRECTED DIFFERENTIAL PRESSURE INDICATOR



AUTOMATIC CALCULATION OF CORRECTED DP IN F/WS AND FILTER MONITORS

JetGard adapts itself to each Associated Company's requirements.

- Starts to gather the data when flow is detected
- Monitoring and visualization of the quality of the fuel
- Generation of personalized reports to the Associated Company with graphic visualization of the content of particulate matter and free water, able to be exported to Excel and .pdf format
- Indefinite storage of the data of each fuelling operation
- Stops the fuelling operations in the event of an alarm
- Local warning / e-mail / pop-up alarm
- Alert predefined level settings
- Real time remote monitoring
- HM Interface



www.jetgard2.com

Designed to comply with ATA103 & JIG requirements
Alarm & Pre-alarm display

Data storage for 2 years of operation

Downloadable data via USB connection compatible with MS Excel[®]

Generation of a report and a graphic of the CDP registered values

Automatic operation when flow detected

Calculation of the lifespan of the filter elements

Local shutdown fuelling operations

Software key

The new Corrected Differential Pressure Indicator PF-CDPI calculates automatically the corrected differential pressure value in the cartridges of the filter/water separators and filter monitors from the actual differential pressure and flow input. Likewise, the device indicates the lifespan of the filter elements.

The high capacity of its internal memory enables to store data for 2 years of operation. At the same time, all those values can be downloaded to a PC.

Data extraction between dates generates a report and a graphic of CDP values registered during the selected period.

PECOFacet's PF-CDPI generates pre-alarms and alarms when the recorded values exceed the set limits (configurable pre-alarms for each installation). The alarm will also be generated if the corrected DP is 5 psi or more below the previous corrected DP reading or if the monitor elements are used lower than 50% of their rated flow and this condition is met at least weekly (according to IATA and JIG guidelines).

The configurable data includes values as multi-language, measurement units (psi, bar, KPa, USGPM, lpm, USG...), nominal flow, filter type, date of installation of new elements...

Information displayed on the screen: differential pressure (corrected, actual, initial corrected, finish corrected, average corrected, maximum corrected), batch number, flow rate, alarm status, date, time, date elements installed, limit date of actual elements, % of memory available (in SD card)...

www.pf-cdpi.com

a new era
in filtration
performance
& innovation



www.jetgard2.com // www.pf-cdpi.com
www.pecofacet.com