

Facet's standard carbon steel VCS Series SuperFlex™ Coalescer Separators are small, economical housings for in-line removal of water and solids from aviation fuels where water content is a problem. Using Facet high quality coalescer and separator cartridges, they provide the best water and solids removal.

RELIABLE PERFORMANCE

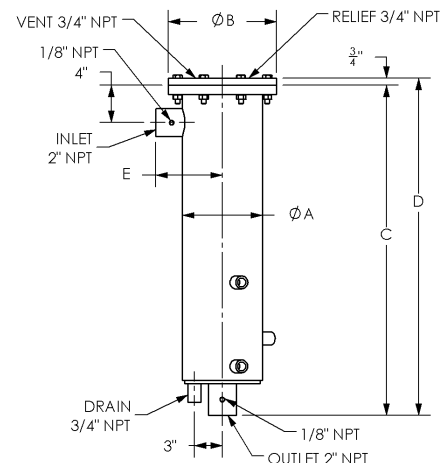
Facet coalescer separators are a result of over 50 years of continuous research and development to meet the ever demanding performance requirements in the aviation fuel handling industry. This, along with proven field performance, demonstrates Facet's ability to provide quality products that meet current specifications as well as specific customer requirements for installations in refineries, bulk storage, terminals, heliports, airports, etc.

STANDARD HOUSING DESIGN

- Welded carbon steel construction—other materials available on request
- ASME Code, Section VIII construction, stamped and certified
- Design pressure: 250 psi @ 250°F
- Main closure: Blind Flange
- Head gasket: Buna-N—other materials available on request
- Vent connection: 3/4" NPT
- Drain connection: 3/4" 3000# NPT
- Inlet and outlet connections: 2" 3000# NPT
- Differential pressure gauge connection: 1/8" NPT
- Interior: Epoxy coated (MIL-PRF-4556)
- Exterior: Prime coated

OPTIONS

- Air eliminator
- Air eliminator check valve
- Manual drain valve
- Pressure gauge assembly
- Pressure relief valve
- Sampling probes
- Adjustable support stand



MODEL NUMBER	INLET/OUTLET DIAMETER		DIMENSIONS												WEIGHT		LIQUID VOLUME	
			A		B		C		D		E							
	in.	mm.	in.	mm.	in.	mm.	in.	mm.	in.	mm.	in.	mm.	lbs.	kgs.	gals.	ltrs.		
VCS-123-7-1S412FC	2	51	8 ⁵ / ₈	219	11 ⁵ / ₈	295	35 ³ / ₈	899	36 ¹ / ₈	918	7 ¹ / ₈	181	100	45	7	26		
VCS-223-7-1S422FC	2	51	8 ⁵ / ₈	219	11 ⁵ / ₈	295	49 ⁷ / ₈	1267	50 ⁵ / ₈	1286	7 ¹ / ₈	181	125	56	10	38		
VCS-323-7-1S432FC	2	51	8 ⁵ / ₈	219	11 ⁵ / ₈	295	63 ³ / ₈	1622	64 ³ / ₈	1641	7 ¹ / ₈	181	150	68	13	49		



STANDARD DESIGN FEATURES

- Provides two-stage coalescing and separation
- Recommended maximum operating temperature: 240°F (115°C)
- Maximum differential pressure: 75 psi (517 kPa)
- pH range from 5 to 9
- Flow direction: Outside to in
- All metal components coated to protect against corrosion
- Standard gaskets are Buna-N—other materials available on request

DIMENSIONS

MODEL NUMBER	OD		ID		LENGTH		WEIGHT	
	in.	mm.	in.	mm.	in.	mm.	lbs.	kgs.
COALESCER								
CC-23-7	7 $\frac{5}{8}$	194	5 $\frac{5}{8}$	143	13 $\frac{1}{16}$	348	4	1.8
SEPARATOR								
SS412FC	4 $\frac{1}{8}$	105	1 $\frac{7}{8}$	48	11 $\frac{1}{2}$	292	3	1.4
SS422FC	4 $\frac{1}{8}$	105	1 $\frac{7}{8}$	48	21 $\frac{1}{2}$	571	6	2.7
SS432FC	4 $\frac{1}{8}$	105	1 $\frac{7}{8}$	48	31 $\frac{1}{2}$	800	9	4.1

FLOW RATES & ELEMENT MODELS

MODEL	ELEMENTS		JET FUEL (1)		JET FUEL (2)		AV-GAS	
	COALESCER	SEPARATOR	gpm	lpm	gpm	lpm	gpm	lpm
VCS-123-7-1S412FC	CC-23-7	SS412FC	37	140	25	94	55	208
VCS-223-7-1S422FC	CC-23-7	SS422FC	75	284	50	189	100	378
VCS-323-7-1S432FC	CC-23-7	SS432FC	112	424	75	284	168	636

1) Qualified to Third Edition of API 1581, Groups I & II, Class C

2) Tested to meet the effluent requirements of EI 1581, Fifth Edition, Category C & M, Type S-LW